

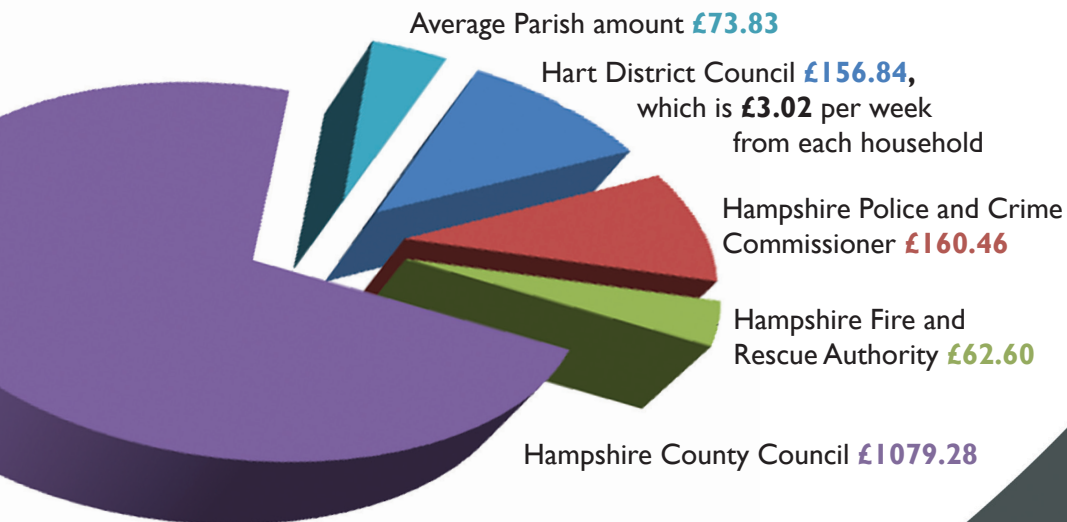
Your Council Tax guide 2016/17

We all use public services. Some are provided locally by Hart District Council, others are provided by authorities covering the whole of Hampshire.

All of the figures in this guide are based on the Council Tax average

Band D at **£1,533.01** per year. The District Council element of the tax has been increased by just **£5** this year.

We collect all of your Council Tax on behalf of all of the authorities listed below. Here is a breakdown of where your money goes:

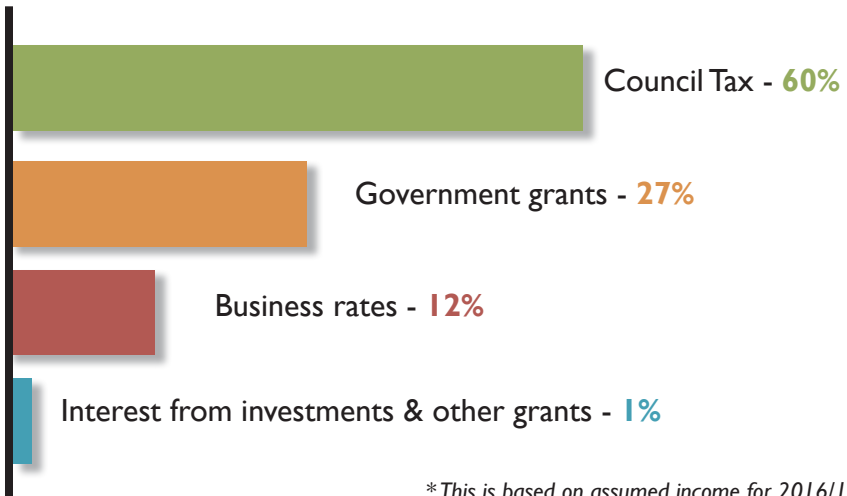


How Hart District Council is funded...

Along with the Council Tax, Hart District Council also receives funding from a range of other taxes such as business rates, governments grants and investments. Below illustrates where the funding* comes from.

However, with continuing significant cuts in government grants, the

District Council has increased its Band D Council Tax by £5, the first increase in six years. With this funding the Council has put together a balanced budget without cutting services, relying on reserves or reducing payments to funded organisations such as the Citizens Advice Bureau (CAB).



**This is based on assumed income for 2016/17*

For more information about the range of services we provide please visit our website www.hart.gov.uk.

You can stay up to date with projects and find out the latest news by visiting our social media channels listed below:



www

www.hart.gov.uk



[/HartDistrictCouncil](https://www.facebook.com/HartDistrictCouncil)



[@HartCouncil](https://twitter.com/HartCouncil)



[/Hart-District-Council](https://www.linkedin.com/company/Hart-District-Council)

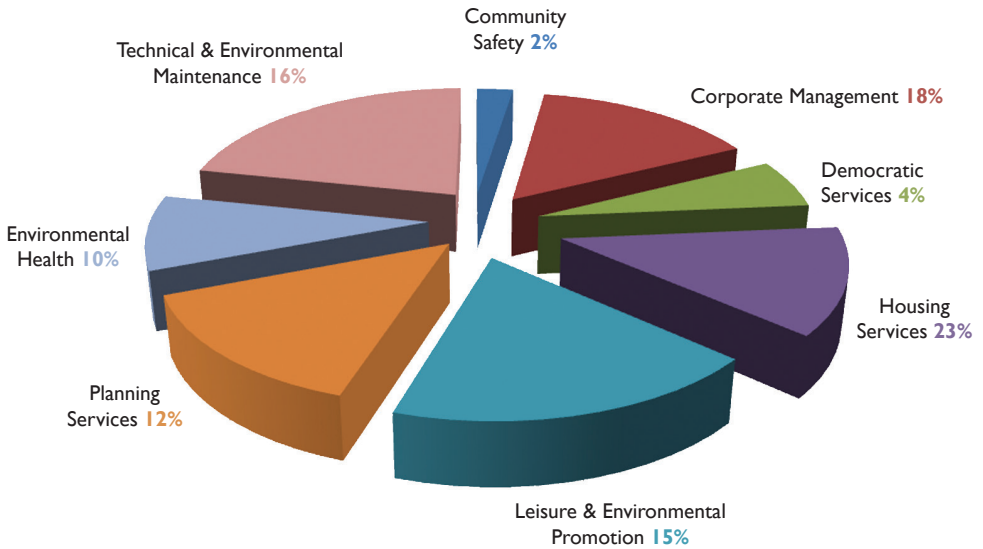


[/hartcouncil](https://www.instagram.com/hartcouncil)



[Hart District Council](https://www.youtube.com/HartDistrictCouncil)

and where the money is spent



A weekly breakdown of what your Council Tax is spent on

Community Safety including dealing with antisocial behaviour and school projects	7p
Corporate Management including emergency planning, grants to the CAB and Hart Voluntary Action	53p
Democratic Services including elections and electoral registration	12p
Housing Services, including disabled facilities grants and seeking to improve private sector housing	68p
Leisure & Environmental Promotion, including managing Fleet Pond, Odiham Common and Hazeley Heath	46p
Planning Services including building control and development control	37p
Environmental Health including pollution and noise control including an out of hours service	30p
Technical & Environmental Services including waste collection, recycling and car parks	49p

Total £3.02

Who provides what service?

Many people assume that all of their Council Tax goes directly to Hart District Council; however the majority of Council Tax goes to Hampshire County Council. Below we have listed what each Council is responsible for, making it easier for you to contact the correct organisation, if you need to.

Hart District Council

- Rubbish collections and dealing with flytipping
- Recycling including grass and glass collections
- The Local Plan and most planning applications
- Delivering affordable housing on new developments, managing the housing register and helping the homeless
- Housing Benefit
- Food, health and safety inspections
- Licensing including taxis and entertainment
- Car parking services
- Leisure and Countryside services
- Street cleaning and most bus shelters
- Pest Control and Dog Warden
- Building Control

How to contact Hart District Council

Enquiries@hart.gov.uk

www.hart.gov.uk

01252 622122 (lines are open 8.30am to 5.00pm Mon to Thurs and 8.30am to 4.30pm Fri)

By post: Hart District Council,
Harlington Way, Fleet, GU51 4AE

Hampshire County Council

- Roads, footpaths, pot hole repairs and gritting
- Social services (child and adult)
- Schools and education
- Libraries and museums
- Adoption and foster care
- Trading standards
- Registration of births, deaths and marriages
- Bus passes for older or disabled people
- Civic amenity sites
- Meals on wheels
- Apply for a 'blue badge' for parking

How to contact Hampshire County Council

info@hants.gov.uk

www.hants.gov.uk

0300 555 1375 or

0300 555 1390 - 'Minicom'

Textphone for hearing and speech impaired customers within Hampshire.

By post: Hampshire County Council,
The Castle, Winchester,
Hampshire, SO23 8UJ

This list is not exhaustive. For a full list of our services please see our website www.hart.gov.uk and for Hampshire County Council please see www.hants.gov.uk.

Please note that all information in this leaflet is based on information available at the time of going to print.