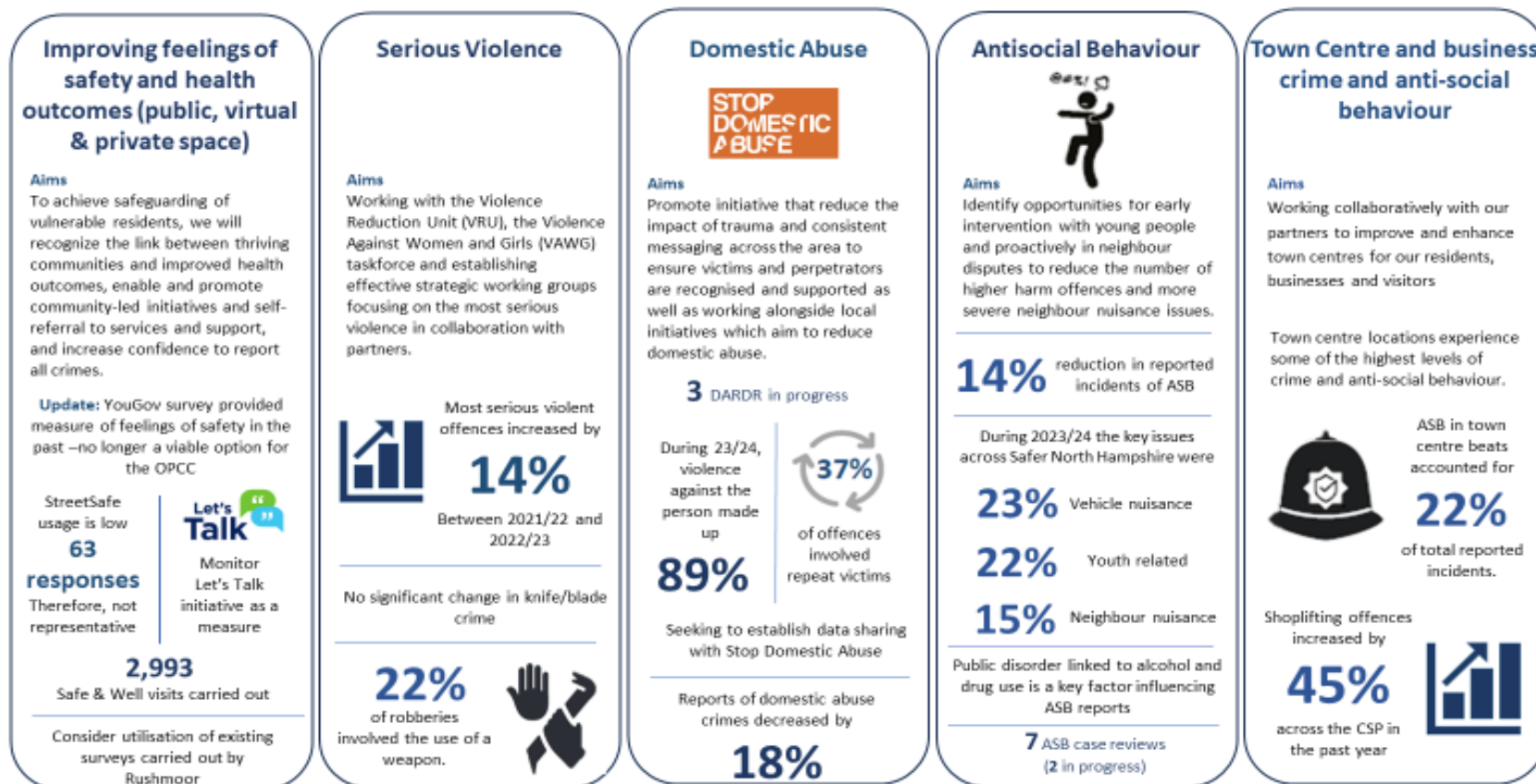


# Key initiatives and statistics related to safety, health and crime prevention across North Hampshire



## Infographic as text

The infographic outlines key initiatives and statistics related to safety, health, and crime prevention across several focus areas in North Hampshire. Here's a summary of each section:

## **1. Improving Feelings of Safety and Health Outcomes (Public, Virtual & Private Space)**

**Aim:** Strengthen community health and safety by promoting local initiatives, supporting self-referrals and encouraging crime reporting.

### **Key updates:**

- StreetSafe platform had limited engagement with only 63 responses, deemed unrepresentative.
- Conducted 2,993 'Safe & Well' visits.
- Considering alternative surveys from Rushmoor for a more accurate safety measure.

## **2. Serious Violence**

**Aim:** Partner with Violence Reduction Units (VRUs) and Violence Against Women and Girls (VAWG) groups to address serious violence.

### **Key statistics:**

- Serious violent offences increased by 14% between 2021/22 and 2022/23.
- No increase in knife-related crimes noted.
- 22% of robberies involved weapons

## **3. Domestic abuse**

**Aim:** Support victims and reduce domestic abuse through consistent messaging and collaboration with local organisations.

### **Key updates:**

- Three Domestic Abuse Repeat Demand Reduction (DARDR) initiatives in progress.
- Domestic abuse incidents decreased by 18%, with 89% involving violence against a person.
- 37% of offences involved repeat victims, emphasising the need for data-sharing with Stop Domestic Abuse.

## **4. Antisocial Behaviour (ASB)**

**Aim:** Reduce ASB by focusing on early intervention with young people and resolving neighbourhood disputes.

**Key statistics:**

- ASB incidents decreased by 14% during 2023/24.
- Major ASB issues included vehicle nuisance (23%), youth-related incidents (22%) and neighbour nuisances (15%).
- Public disorder related to alcohol and drug use is a significant ASB factor.
- Seven ASB case reviews were completed (two are ongoing).

**5. Town Centre and Business Crime & Antisocial Behaviour**

**Aim:** Collaborate with partners to enhance safety in town centres for residents, businesses, and visitors.

**Key statistics:**

- ASB in town centres accounted for 22% of total incidents.
- Shoplifting incidents in town centres increased by 45% over the past year.
- Each section reflects a targeted approach to tackling specific safety, health and crime challenges in the region, with statistics highlighting recent changes and ongoing efforts.